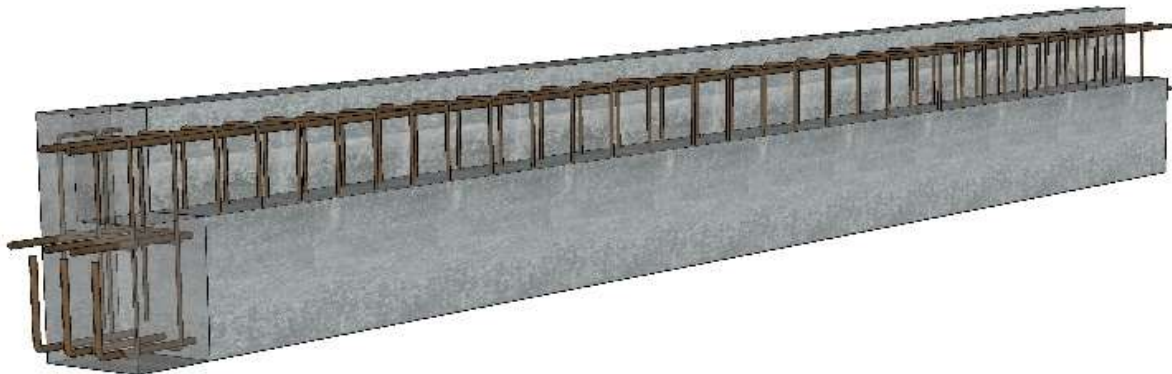




SYSTEM PRECAST BETON

PRECAST & PRE-STRESSED BEAM



Dimensions		
Width (cm)	20 or 25	
Height (cm)	from 20 to 35	
Length (cm)	from 100 to 650	
Average weight (kg/ml)	20*20	100 kg
	25*25	156 kg
	25*30	187 kg
	25*35	218 kg

Standard	Features
EUROCODE	<ul style="list-style-type: none"> - concrete 500 kg/m³ - cement with additive CPA 52,5 - strand with low retraction 1,860 Mpa - concrete resistance after 21 days : 70 Mpa

Use	Advantages
<ul style="list-style-type: none"> - Individual houses - Collective buildings, public real estate - Industrial premises, offices - Bridges 	<ul style="list-style-type: none"> - usual length: 6.50 meters (can be extended to 15 meters) - no formwork needed - 40% concrete and steel less - easy and fast assembly - high and long-term sturdiness - fire resistant



SYSTEM PRECAST BETON

PRECAST & PRE-STRESSED BEAM



A team of 5 workers can assemble 30 Precast pre-stressed beams per day

Precast pre-stressed beam retaining other beam



Connection beam



Crossing beam



Crossing beam